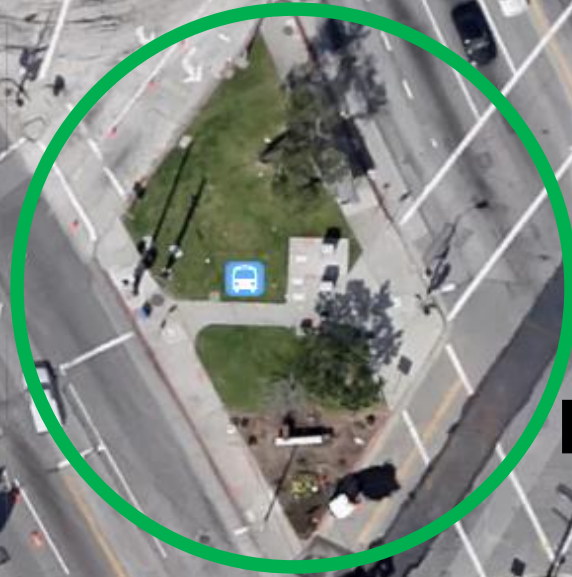
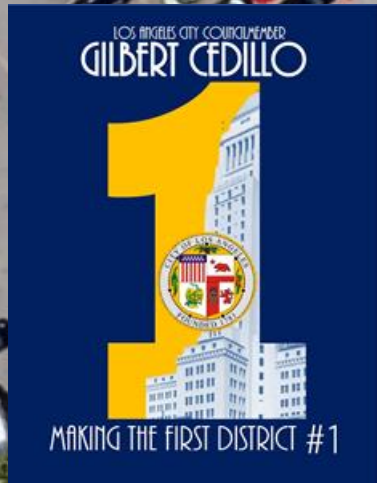


Glassell Park Transit Pavilion Project



Project Site





COMMUNITY SIGNIFICANCE & IMPACT OF PROJECT SITE

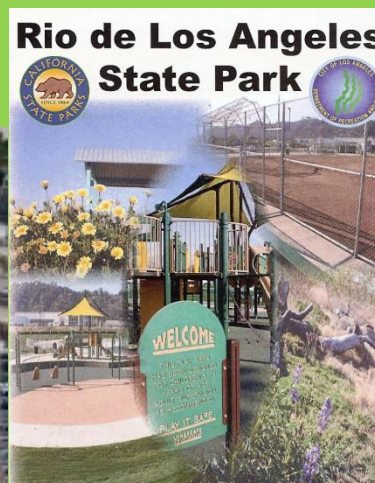
Glassell Park Monument Site

Metro Buses From Glassell Park Transit Hub

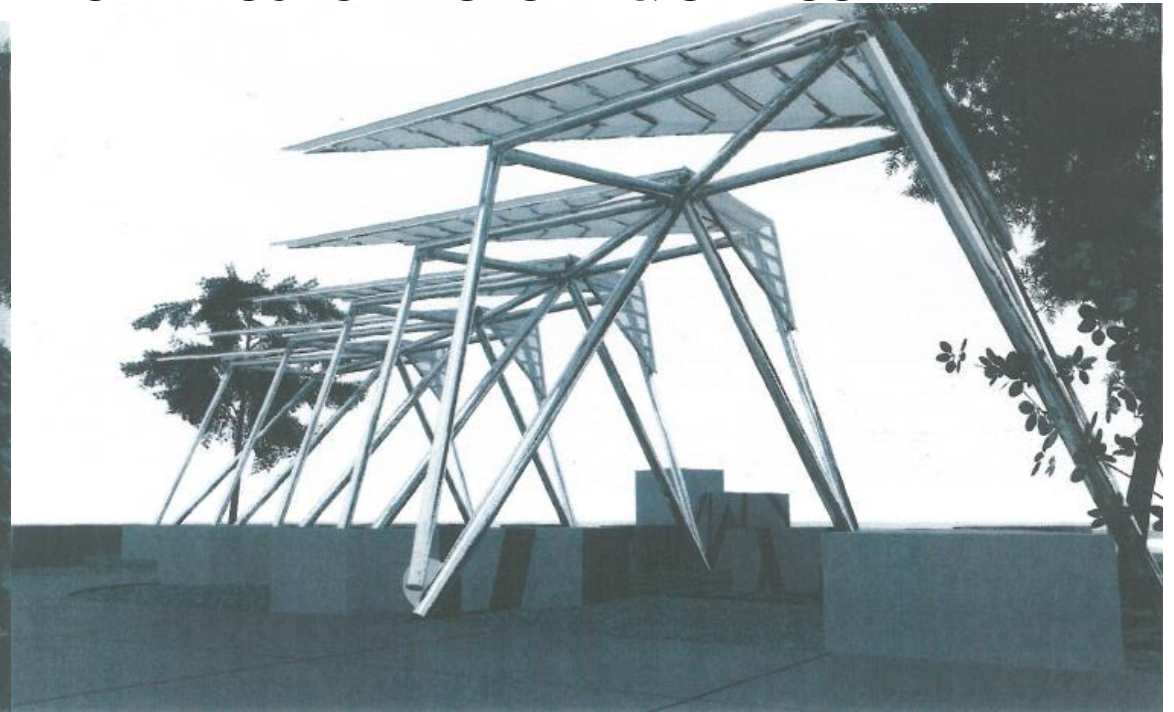
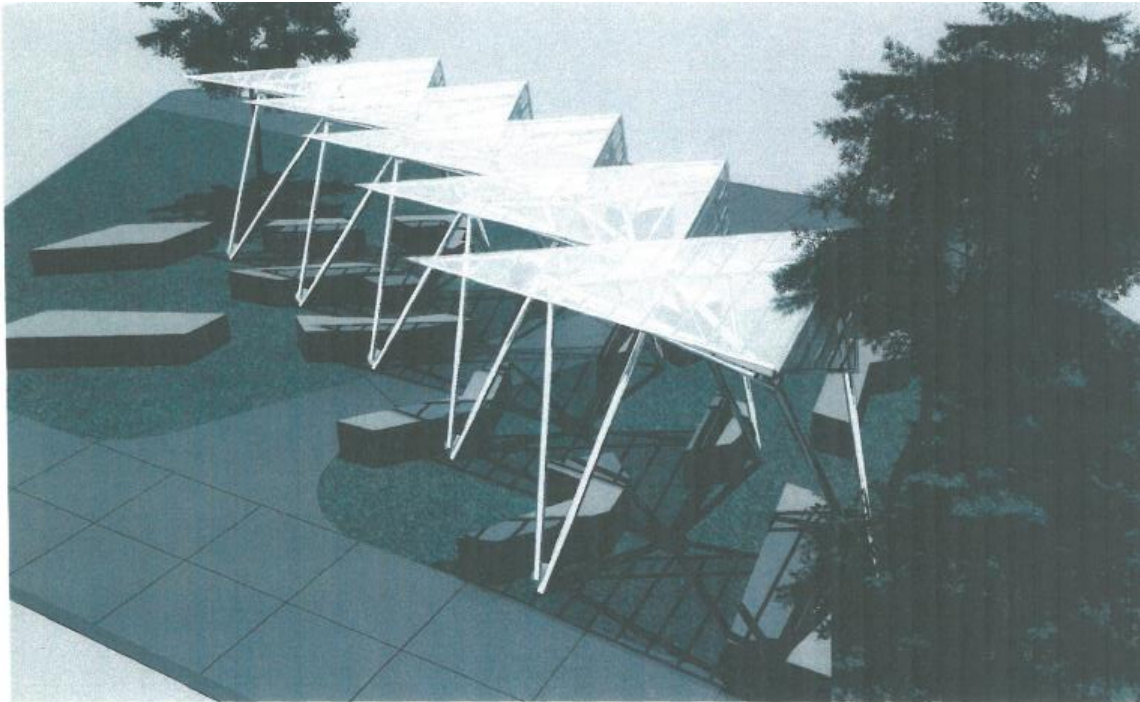
- 90 Olive View Medical Center
- 91 Sunland
- 94 Sylmar
- 794 Sylmar Station

Student Pedestrian Safety

- Sotomayor Learning Academies
- Glassell Park Elementary School
- Rio de Los Angeles State Park
- LACCD Van de Kamp Innovation Center
- Environmental & Technology High School



GLASSELL PARK TRANSIT PAVILION PROJECT HISTORY & STATUS



- 2004-2005** Community Beautification Grant Application and Award #08-001 to GPNC.
- 2005** Community meetings; and design by SciArc Students & teacher, Michael Pinto, who served as architect
- 2006-2007** GP Stakeholder Meetings with City Departments on design and plans; CB Grant transferred to GPIA
- 2008-2009** Congressman Becerra earmarked \$190,000 FTA funds for project plus 20% City's Prop C Matching funds = Project Total Funding of \$237,500
- 2011** City executed FTA Grant Agreement

- 2011** General Services Department Preliminary Estimate for Shade Structure, Benches & Landscaping = \$310,455
- 2012** BOE Presentation of 2 Options to GP Lead project stakeholders and former CD1: In-House Design = \$390,000; Original SciArc Design \$630,000; both options included \$100,000 cost for possible utility relocation
- 2012 - June 2013** Bureau of Engineering authorized and completed site survey and mapping of underground utilities.
- September 2013 – August 2014** CD1 has had multiple communications and meetings with Glassell Park Lead Project Stakeholders and City Departments – BOE, BSS, & DOT relating to feasibility of down scoping project and alternative solutions to achieve community's priorities

CURRENT STATUS AND ISSUES RELATING TO ORIGINAL SCI-ARC DESIGN

- BOE & GSD'S 2011/2012 COST ESTIMATE OF \$630,000 IS OLD
- A NEW COST ESTIMATE/REQUEST FOR BID IS REQUIRED & IS ANTICIPATED TO BE HIGHER
- PROPOSED STRUCTURE IS NON-STANDARD WITH MULTIPLE PARTS, AND RAISES A NUMBER OF MAINTENANCE AND LIABILITY ISSUES
- BSS IS RESPONSIBLE FOR MAINTENANCE OF CITY'S TRAFFIC ISLANDS/MEDIANS AND WILL NOT MAINTAIN NON-STANDARD SHADE SHELTER
- SURVEY OF UNDERGROUND UTILITIES HAS BEEN COMPLETED AND THEY ARE EXTENSIVE, INCLUDING A GAS LINE.
- MAJOR CONCERN AND UNKNOWN COST FACTOR IS POTENTIAL UTILITY RELOCATION
- KNOW WHERE THE UTILITY BOXES ARE LOCATED ON THE SITE, BUT DON'T KNOW WHAT IS BELOW GROUND.
- CURRENT PROJECT FUNDING SOURCE ARE FEDERAL FUNDS AND REQUIRES ALL MATERIALS TO BE MADE IN USA.
- CURRENT AVAILABLE FUNDING IS \$237,500 AND SOURCE ARE FEDERAL FUNDS.
- FUNDING SHORTAGE FOR SCIARC DESIGNED PROJECT IS GREATER THAN \$392,500
- PROJECT IS AT RISK OF LOSING FTA FUNDING DUE TO LACK OF PROGRESS ON PROJECT IMPLEMENTATION

JUNE 2014 PROJECT SITE CONDITIONS



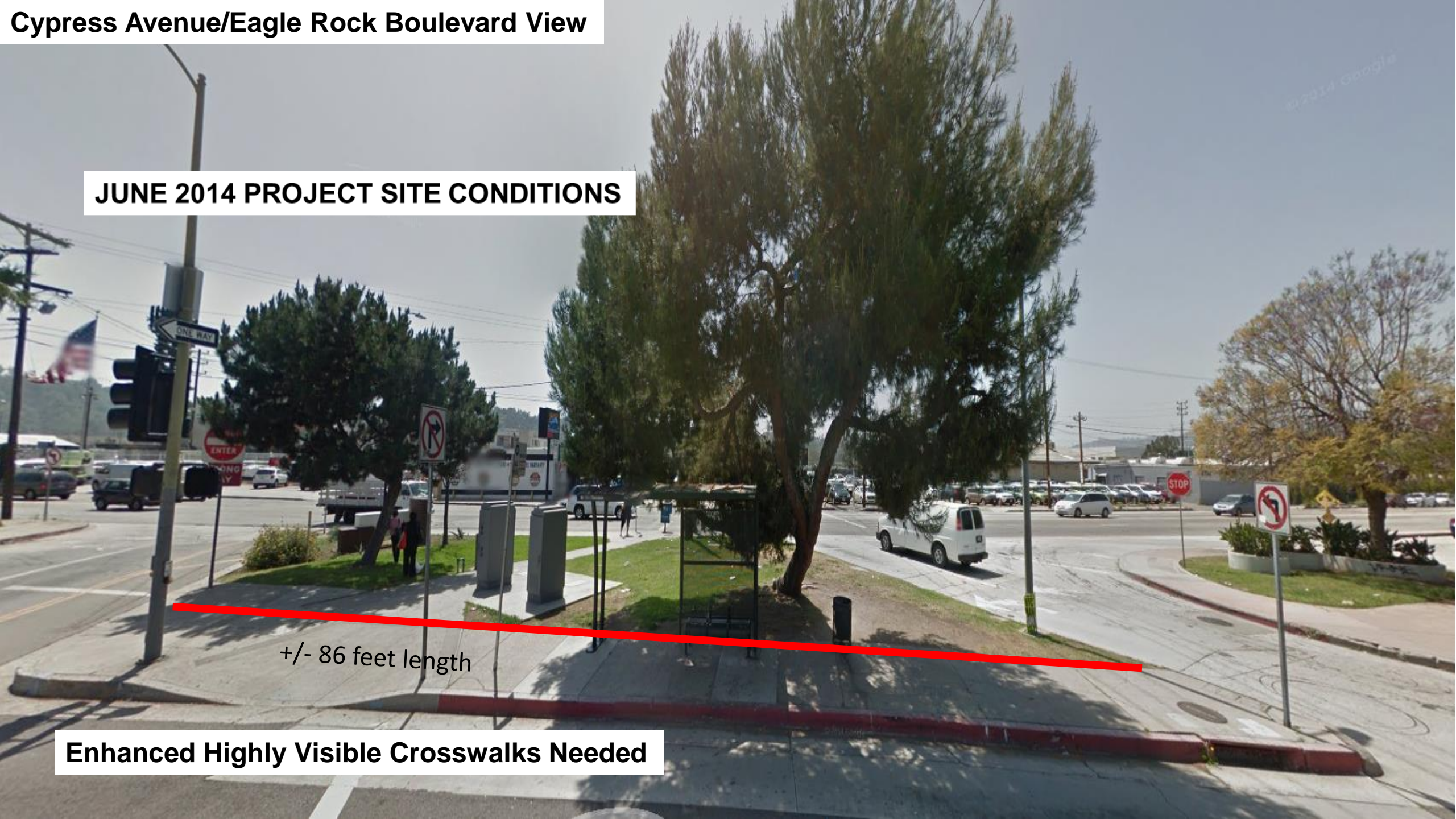
Damaged Curb and Gutter

Enhanced Highly Visible Crosswalks Needed

JUNE 2014 PROJECT SITE CONDITIONS

+/- 86 feet length

Enhanced Highly Visible Crosswalks Needed



JUNE 2014 PROJECT SITE CONDITIONS



+/- 85 feet length

Enhanced Highly Visible Crosswalks Needed

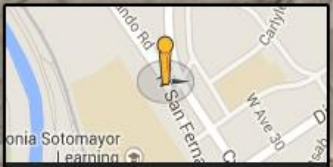
San Fernando Road View

N San Fernando Rd
Street View - Jun 2014

JUNE 2014 PROJECT SITE CONDITIONS



+/- 92 feet length





GLASSELL PARK TRANSIT PAVILION PROJECT ALTERNATIVE

Potential List & Location of Improvements

- A. Canopy Shade Structure(s)
- B. Drought Tolerant Landscaping
- C. Planters
- D. Benches
- E. Security Lighting at Transit Shelter
- F. Pedestrian Lighting
- G. Transit Shelter
- H. Decorative Paving
- I. Continental Crosswalk Striping
- J. Curb & Gutter Repairs
- K. Bike Racks & Fix-it Station

**TOTAL DEVELOPMENT COST:
\$487,500**

**GLASSELL PARK TRANSIT PAVILION
ALTERNATIVE CONCEPTUAL DESIGN**

VERDUGO RD.

EAGLE ROCK BLVD.

SAN FERNANDO RD.

BUS PAD

BUS PAD

EXISTING SIDEWALK

EXISTING SIDEWALK

NEW LANDSCAPE
TYP.

EXISTING
SIGN

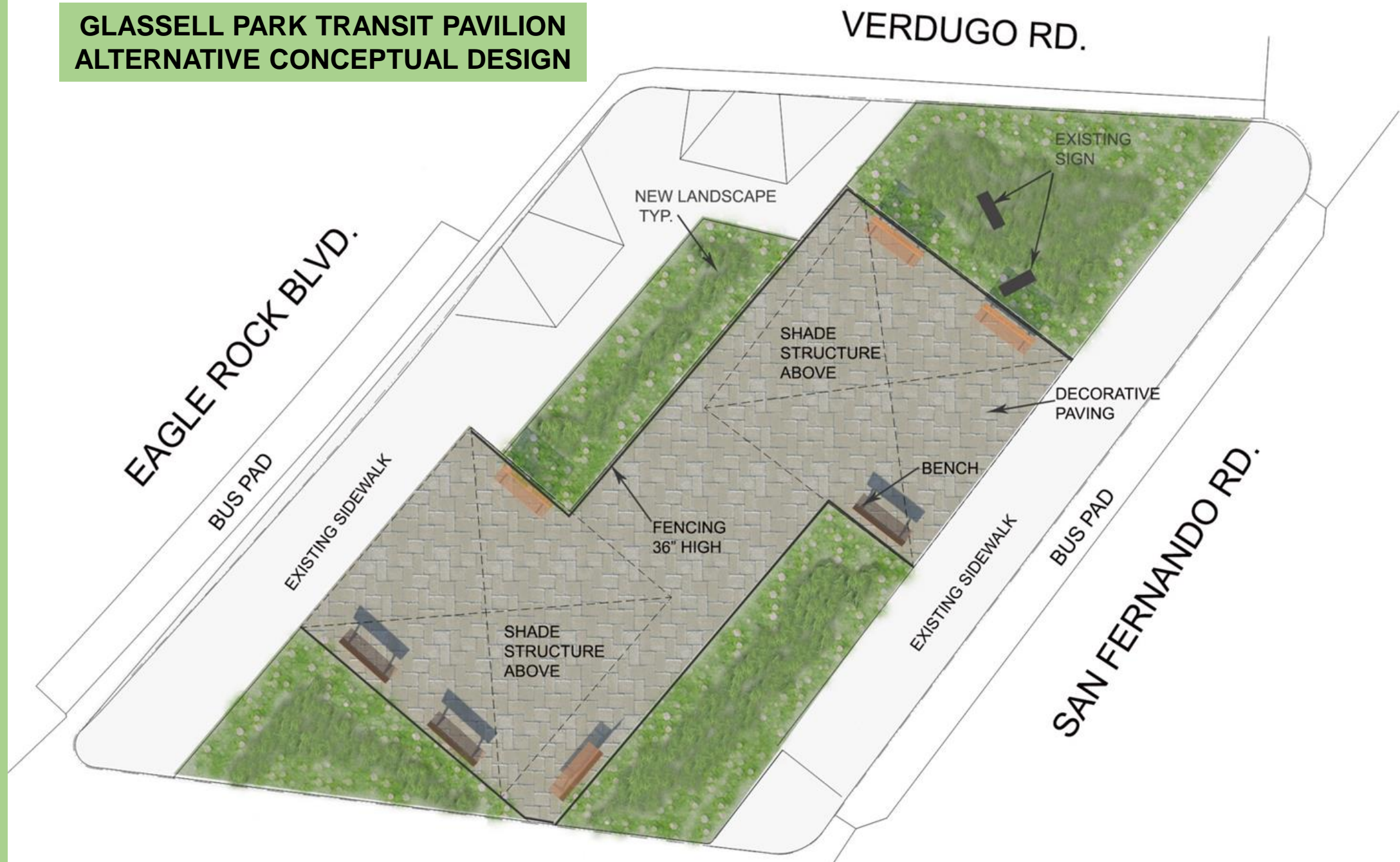
SHADE
STRUCTURE
ABOVE

DECORATIVE
PAVING

BENCH

FENCING
36" HIGH

SHADE
STRUCTURE
ABOVE



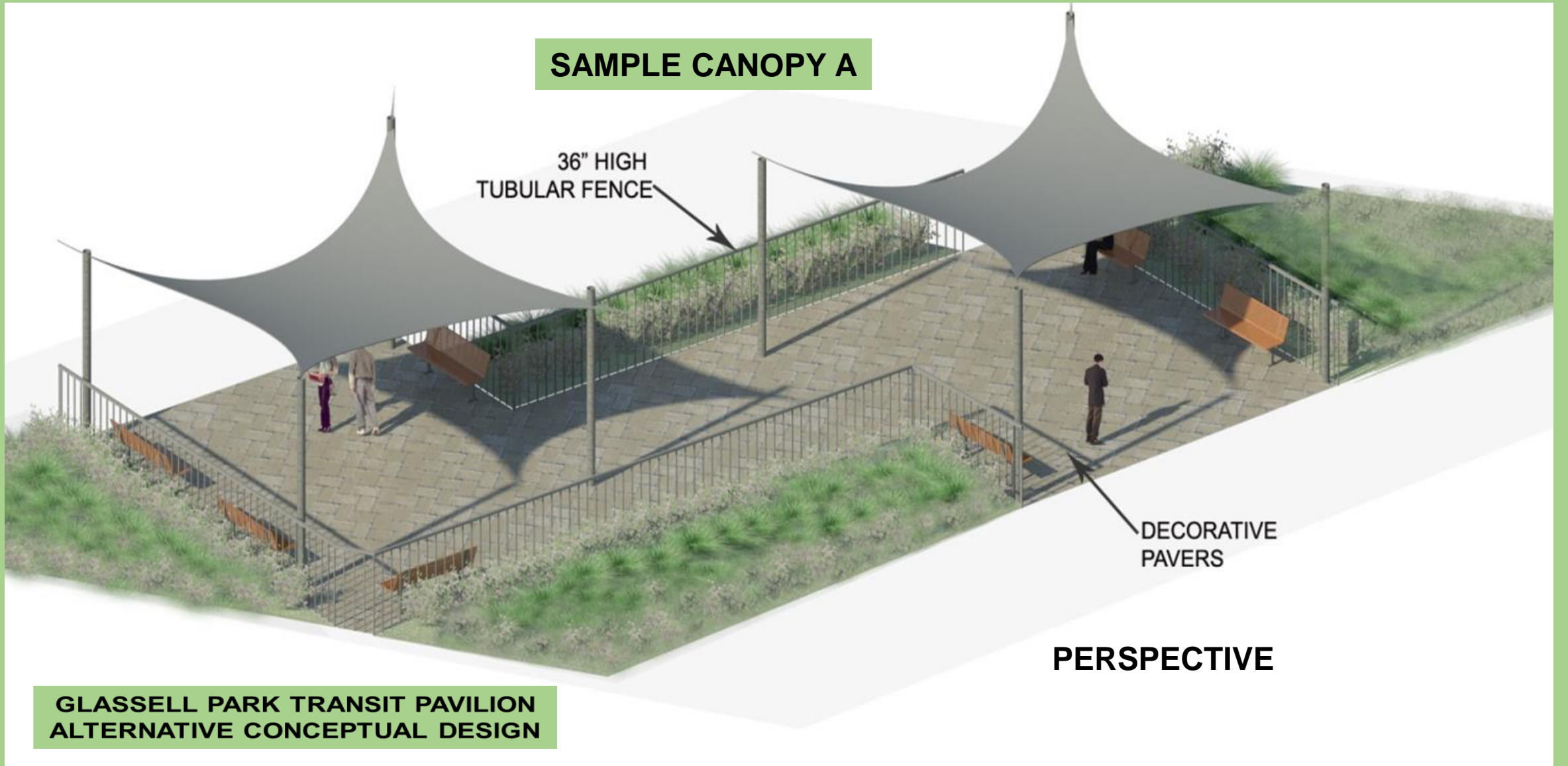
SAMPLE CANOPY A

36" HIGH
TUBULAR FENCE

DECORATIVE
PAVERS

PERSPECTIVE

**GLASSELL PARK TRANSIT PAVILION
ALTERNATIVE CONCEPTUAL DESIGN**





SAMPLE CANOPY B

**GLASSELL PARK TRANSIT PAVILION
ALTERNATIVE CONCEPT DESIGN**



**MULTIPLE VIEW
PERSPECTIVES**



MARSON PARK



WHITSETT FIELD

PRECEDENCE



ADDITIONAL SAMPLE IMAGES OF INSTALLED USASHADE CANOPIED SHADE STRUCTURES



COMPARATIVE ANALYSIS OF ORIGINAL SCI ARC DESIGN & RECOMMENDED PROJECT ALTERNATIVE

ORIGINAL SCI ARC DESIGN CONCEPT

- 2004-2008 Community Engagement & Support of Student Designed project
- SciArc Design requires additional City Departmental review, bid process, and requires all materials to be made in USA
- Shade Structure has multiple parts and uniquely designed and raises issues of sustainability, maintenance, and liability
- Project includes benches, drought landscaping, hardscape, and requires ADA compliance
- Project will provide needed shade and beautification of traffic island site.
- Total available funding = \$237,500
- Additional needed funding = >\$392,500
- Not eligible for Neighborhood Improvement Funding Grant
- Completion dates for design and construction is undetermined
- Total Project Cost = > \$630,000
- At Risk of losing Federal Funding

PROJECT ALTERNATIVE CONCEPT

- Similar Canopy Shade Structure Concept but utilizes approved Recreation and Parks Vendor – USAShade
- Canopy Shade Structure is design-build, sustainable and warranted, and will not require bid process plus all materials made in USA
- Alternative concept also includes benches, drought tolerant landscaping, hardscape and ADA compliance
- Alternative concept will also provide additional transit user, pedestrian, and bicyclist security and beautification amenities such as lighting, trash receptacles, fencing, planters, bike racks and fix-it station
- Project similarly provides needed shade and beautification of traffic island site, but also provides security through lighting and planters and fencing as physical barriers from vehicles.
- Total available funding = \$237,500
- Eligible for Neighborhood Improvement Funding Grant = \$250,000
- Completed design and installation within 24 months
- Total Project Cost = \$487,500

COMMUNITY DISCUSSION



- **Concerns**
- **Priorities**
- **Preference**
- **Conclusion**